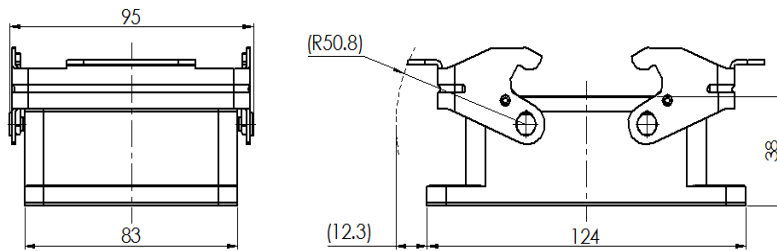


Size 32B Panel mounting base, Plastic protective cover with double locking latch



Typecode H32B-OM-2L
ID 1 007 01 0000792

Technical Data

Product Properties

Series	Size 32B
Mating with	HE-032, HEE-064, HD-080 HDD-144, HSB-12
Housing type	Panel mounting base
Cable outlets direction	Bottom open ends
Locking type	With double locking latch
Mounting type	Panel mounting
Protection Class	IP65
Impact strength	IK08
Temperature range	-40 °C ... 125 °C
Standard	DIN EN 175301-801

Insert

Housing material	Die-cast aluminum
Color	Gray (RAL 7037)
Locking latch material	Metal, Zinc-plated
Seal	NBR, black

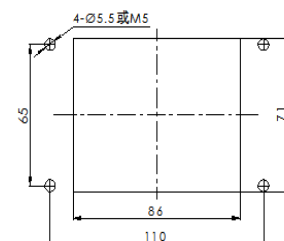
Commercial data

Weight	229 g
Packaging unit	1 pc
Country of origin	CN

Features

- Die casting of aluminum
- Metal locking latch
- Impact resistant protective cover
- Bottom open ends
- Panel mounting base
- NBR, black
- Resistant to salt spray
- Approval: UL94-V0
- RoHS-compliant

Mounting cutout



*The design data are listed here, and the changes to the product are not described here. For unfinished matters, please contact customer service. It is the user's responsibility to verify functionality, compliance with applicable laws and instructions, and electrical safety in specific applications.