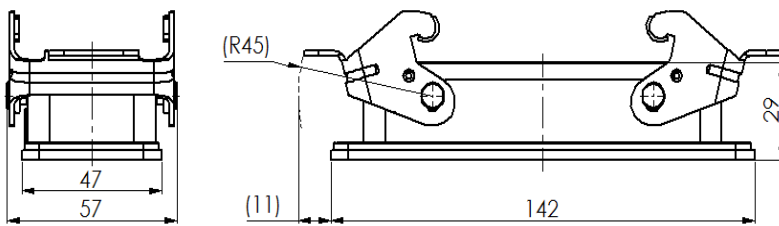


Size 24B Panel mounting base, Plastic protective cover with double locking latch



Typecode H24B-OM-2L
ID 1 007 01 0000672

Technical Data

Product Properties

| | |
|-------------------------|--|
| Series | Size 24B |
| Mating with | HE-024, HEE-046, HD-064 HDD-108, HK-004/8 |
| Housing type | Panel mounting base |
| Cable outlets direction | Bottom open ends |
| Locking type | With double locking latch |
| Mounting type | Panel mounting |
| Protection Class | IP65 |
| Impact strength | IK08 |
| Temperature range | -40 °C ... 125 °C |
| Standard | DIN EN 175301-801 |

Insert

| | |
|------------------------|--------------------|
| Housing material | Die-cast aluminum |
| Color | Gray (RAL 7037) |
| Locking latch material | Metal, Zinc-plated |
| Seal | NBR, black |

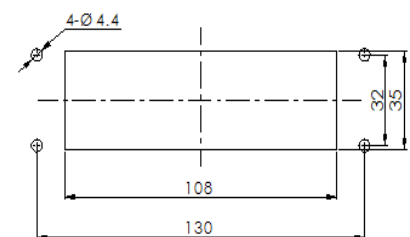
Commercial data

| | |
|-------------------|-------|
| Weight | 150 g |
| Packaging unit | 1 pc |
| Country of origin | CN |

Features

- Die casting of aluminum
- Metal locking latch
- Impact resistant protective cover
- Bottom open ends
- Panel mounting base
- NBR, black
- Resistant to salt spray
- Approval: UL94-V0
- RoHS-compliant

Mounting cutout



*The design data are listed here, and the changes to the product are not described here. For unfinished matters, please contact customer service. It is the user's responsibility to verify functionality, compliance with applicable laws and instructions, and electrical safety in specific applications.