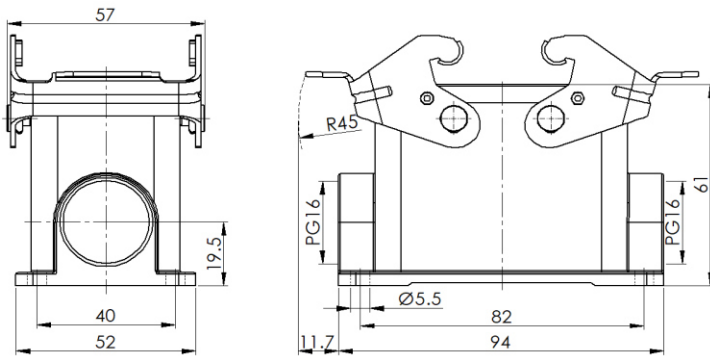


Size 10B Bulkhead mounted housing



Typecode H10B-SM-2L-2PG16

ID 1 007 01 0000294

Technical Data

Product Properties	
Series	Size 10B
Mating with	HE-010, HEE-018, HDD-042
Housing type	Surface mounted hous
Cable outlets direction	Side entry
Cable outlets	PG16, 2
Locking type	Double locking lever
Installation mode	Panel mount
Protection Class	IP65
Impact strength	IK08
Temperature range	-40 °C ... 125 °C
Standard	DIN EN 175301-801

Insert	
Housing material	Die-cast aluminum
Color	Gray (RAL 7037)
Latch	Metal, surface galvanizing
Seal	NBR, black

Commercial data	
Weight	219 g
Packaging unit	1 pc
Country of origin	CN

Features

- Die casting of aluminum
- All metal buckle
- Side entry
- Surface fixed installation
- NBR, black
- Resistant to salt spray
- Approval: UL94-V0
- RoHS-compliant
- Applicable to surface high-density installation

*The design data are listed here, and the changes to the product are not described here. For unfinished matters, please contact customer service. It is the user's responsibility to verify functionality, compliance with applicable laws and instructions, and electrical safety in specific applications.