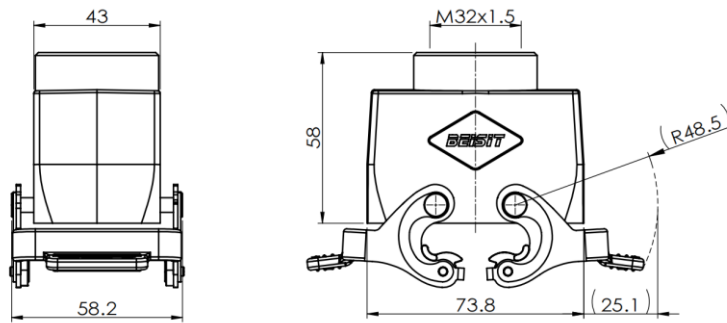


## Size 10B Sleeve housing, top opening hole, stainless steel with double locking latch



Typecode H10B-TO-2LS-M32

ID 1 007 01 0000242

### Technical Data

#### Product Properties

Series	Size 10B
Mating with	HE-010, HEE-018, HDD-042
Housing type	Sleeve housing
Cable outlets direction	Top opening hole
Cable outlets	M32x1.5
Protection Class	IP67
Impact strength	IK08
Temperature range	-40 °C ... 125 °C
Standard	DIN EN 175301-801

#### Insert

Housing material	Die-cast aluminum
Color	Gray (RAL 7037)
Latch	Stainless steel

#### Commercial data

Weight	193 g
Packaging unit	1 pc
Country of origin	CN

### Features

- Die casting of aluminum
- Stainless steel with double locking latch
- Top opening hole
- Resistant to salt spray
- Approval: UL94-V0
- RoHS-compliant

\*The design data are listed here, and the changes to the product are not described here. For unfinished matters, please contact customer service. It is the user's responsibility to verify functionality, compliance with applicable laws and instructions, and electrical safety in specific applications.