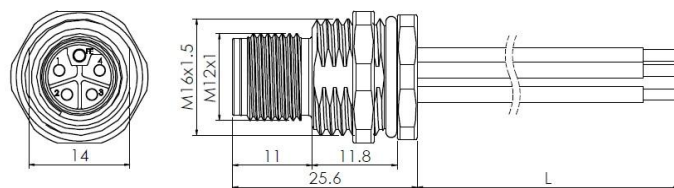


Accessories for actuator/sensor cables – male flange with wires, rear-mounted



Typecode **M12L4EMBRB6WV005011**

ID **1006020000468**

Technical Data*

Connector A

Connector	M12, L-Coding
Number of Pins	5-Pin
Contacts	Brass, Gold-plated
Flange housing	Brass, Nickel-plated
Mounting type	Rear-mounted
Contact Carriers	PA
Seal	FKM
Screw-in thread	M16 × 1.5
Connection mode	Wires connection
Mechanical lifespan	≥ 100 Mating cycles
Pollution degree	3
Protection Class	IP67, (screwed together)
Cable length	0.5 m
Core insulation	mPPE
Core cross-section	1.5 mm ² /16 AWG
Core colors	1-BN, 2-WH, 3-BU, 4-BK, FE-GY
Locking mode	Screw M12 x 1
Standard	IEC 61076-2

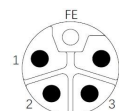
Electrical properties at +20 °C

Rated Voltage	63 V
Rated current	16 A
Pulse resistance	1.5 KV
Contact resistance	≤5 mΩ
Insulation resistance	≥100 MΩ

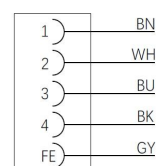
Features

- M12, Male, 5Pin
- Resistant to salt spray
- Protection Class: IP67
- RoHS-compliant
- Approval: cULus, CE

Contact assignment



Connection diagram



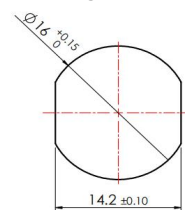
Technical Data***Mechanical and chemical properties**

Ambient temperature range (stationary) -40 °C ... 105 °C

Commercial data

Packaging unit 1 pc

Country of origin CN

Through bore

* Please note that the data specified here were design data, and the parameters of product are subject to changes without prior notice. Matters not mentioned herein. Please contact customer service. Please also note that the user is responsible for validating functionality, conformity with applicable laws and directives, as well as for the electrical safety in the particular application.